

M1-210GDS

2-core Single-mode DVI Fiber Extender

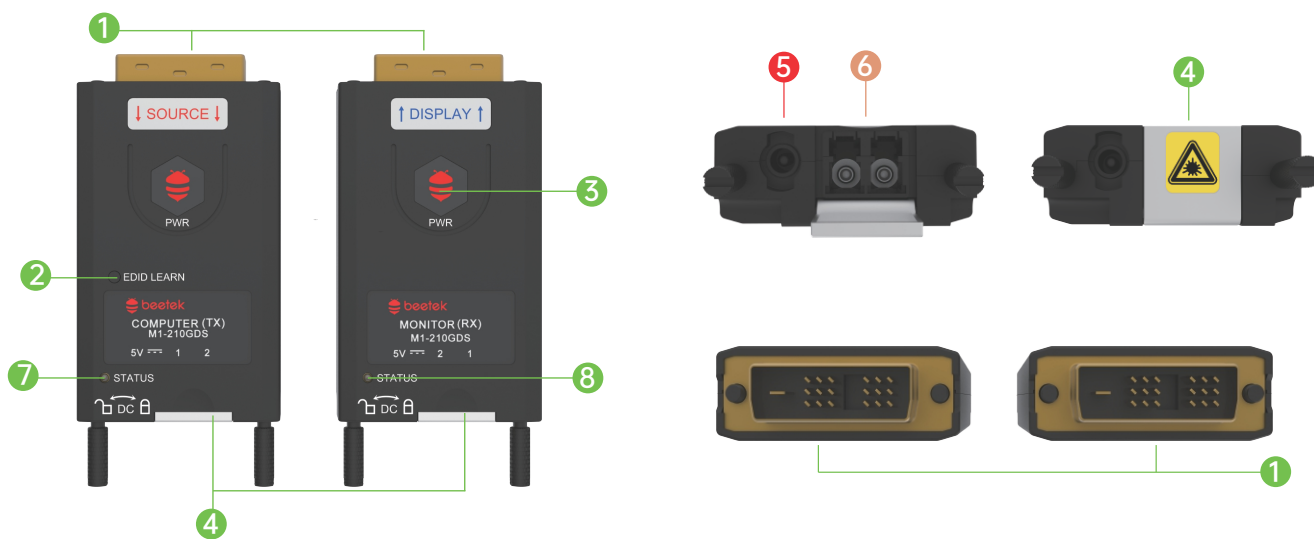
Product number:1.05

Summary

M1-210GDS is an uncompressed, zero-frame-delay DVI single-mode fiber optic extender with a compact design and convenient use. The product uses two-core LC interfaces with single-mode fiber which can transmit a lossless DVI signal up to 2000 meters, and supports a maximum resolution of 1920*1080@60Hz 4:4:4. Built-in EDID transmission and external EDID learning button make it suitable for many professional audio and video applications.



Product view

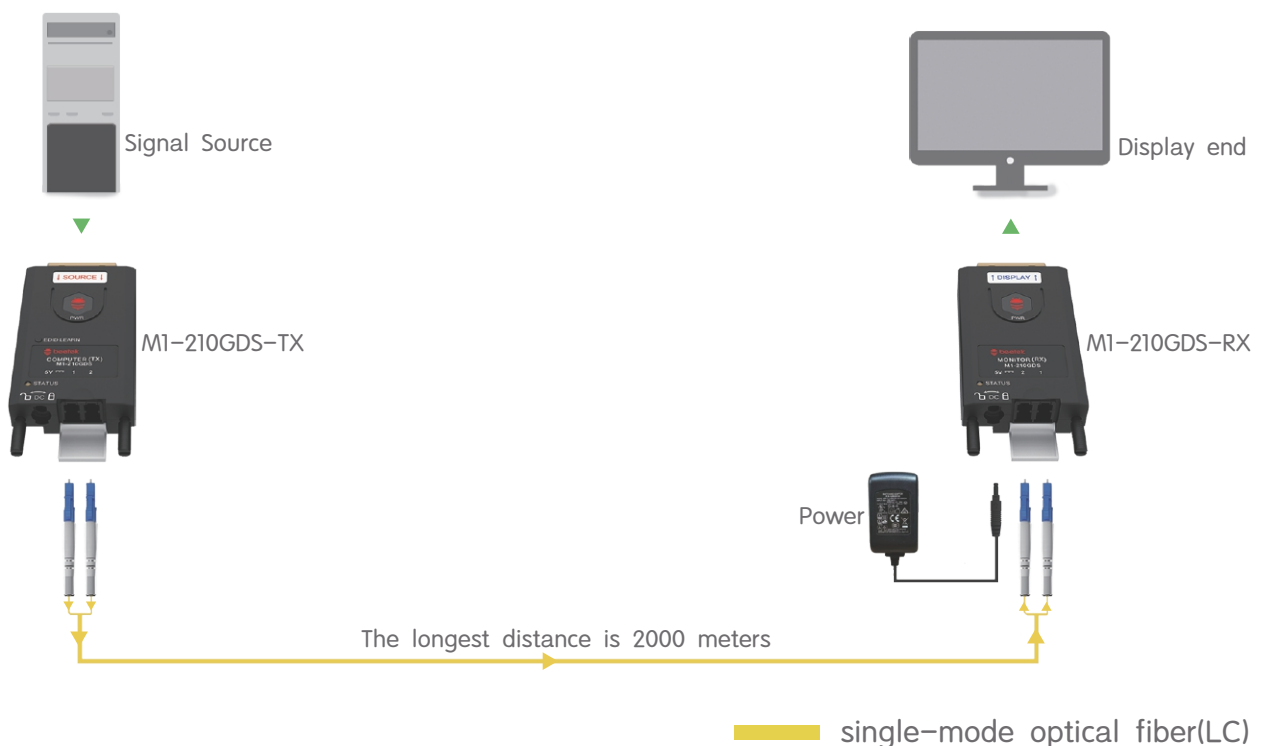


number	name	number	name
1	DVI 18+1(M)	5	DC 5V power port
2	EDID Learning button	6	LC fiber interface
3	POWER Red LED	7	EDID learning light
4	Dust cover	8	Signal light

Technical characteristics

- ◆ Mini-style two-core single-mode DVI fiber extender.
- ◆ Lossless video extension without compression and zero-frame delay, 100% restoration of source signal.
- ◆ The transmission rate is 4.95Gbps, and the maximum support is 1920*1080@60Hz.
- ◆ Single-mode G657.A1 optical fiber with two-core LC connector can transmit up to 2000 meters.
- ◆ With its Mini-style design, it can plug and play directly to the signal source or display end.
- ◆ Reliable connection is ensured with locking power supplies and dust-proof fiber interface latches.
- ◆ To solve the pain-point of power supply, the transmitter can take power, and there is also an optional USB power supply cable provided.
- ◆ Built-in EDID transmission and an EDID learning mode make the product suitable for various applications.
- ◆ 15 μ high-quality gold-plated DVI pins support more than 5000 times of repeated plugging and unplugging.

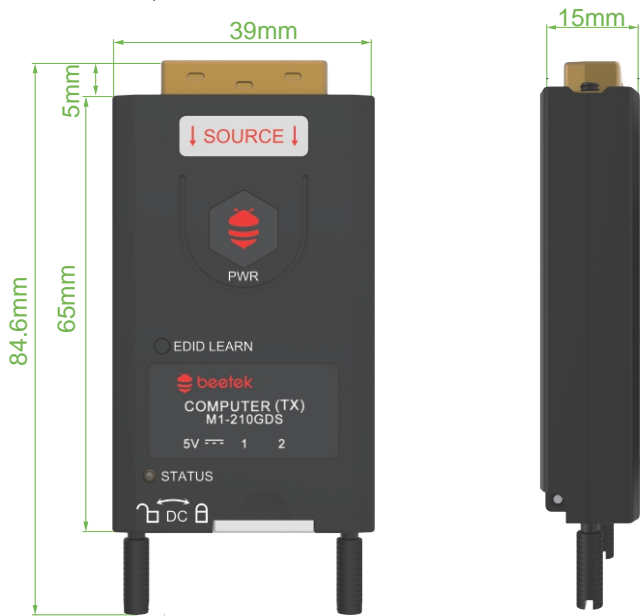
Application view



Product parameter

name	parameter
Input Interface	TX: DVI 18+1 Male RX: 2-core LC
Output Interface	TX: 2-core LC RX: DVI 18+1 Male
Rear Long Screw	Yes
Gold plate Interface	Casing: 3 μ ; Pin: 15 μ
Fiber Interface Dust Prevention	Yes
Fiber Type	Single-mode G657.A1
Indicator LED	TX: Power, EDID; RX: Power, Signal
USB Power	Yes
Power from Interface (TX)	Yes
Locking power Interface	Yes
Power Consumption	DC 5V 1.0A
Ambient Temp	-20 $^{\circ}$ C ~ 70 $^{\circ}$ C
Material	Zinc alloy mold
EDID Switch (TX)	Learn button
EDID Modes	EDID Learning and Internal
HDMI Audio	Yes
XvYCC Color Space	Yes
Fiber module life	100,000 hours
Optical Module	4 * 2.5G Single-mode Optical Module
Technical Characteristics	Two-channel two-wave using CWDM Technology
Resolution	1920*1080@60Hz
Transmission Distance	Single-mode: 2000M; Multi-mode OM3: 500M
Clock Bandwidth	165MHz * 3
Transmission Speed	4.95Gbps
Balancing Chip	Automatic equalization
Reclocking	Yes
ESD Protection	Yes
Hot Plug	Yes
Delay	Zero-frame
Compression	None
Sampling Rate	Bandwidth Range: 8bit
Sampling Ratio	RGB 4:4:4、YUV4:4:4、YUV4:2:2、YUV4:2:0

Dimensional drawing



- Product size TX\RX: 85 *39 *15mm
- Product weight TX: 98g; RX: 97g
- Package size 212 *201* 62mm
- Packing weight 0.52kg