

# M1-410GDM

4-core Multi-mode DVI Fiber Extender

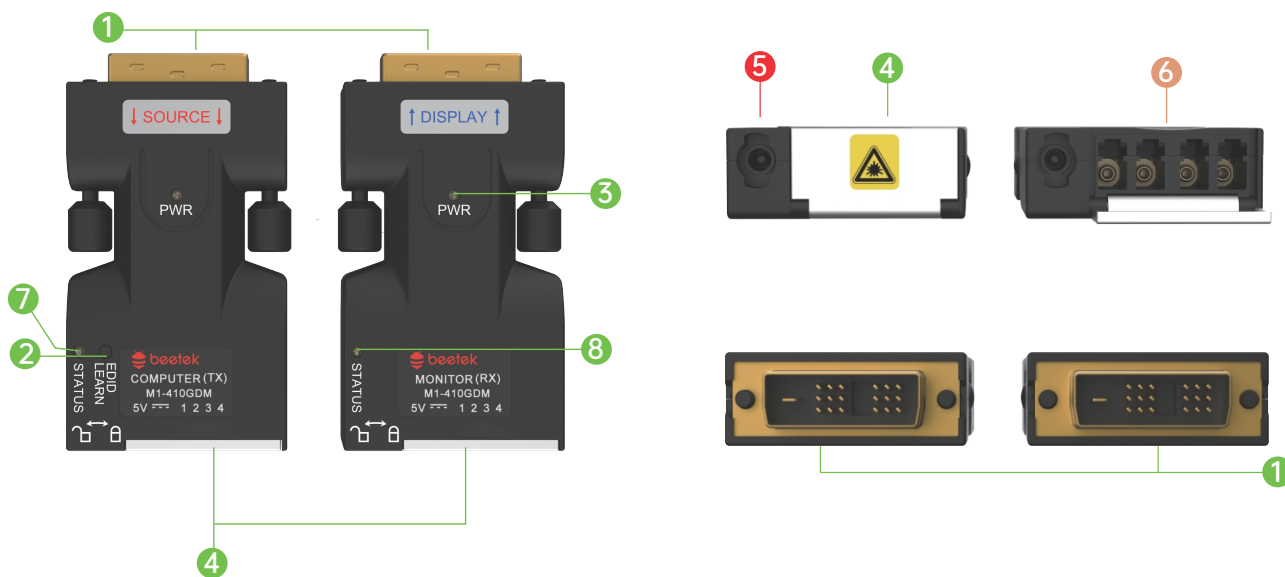
Product number:1.06

## Summary

**M1-410GDM** is an uncompressed, zero-frame-delay DVI multi-mode fiber optic extender with a compact design and convenient use. The product four-core LC interfaces with multi-mode OM3 fiber which can transmit a lossless DVI signal up to 500 meters, and supports a maximum resolution of 1920\*1080@60Hz 4:4:4. Built-in EDID transmission and external EDID learning button make it suitable for many professional audio and video applications.



## Product view

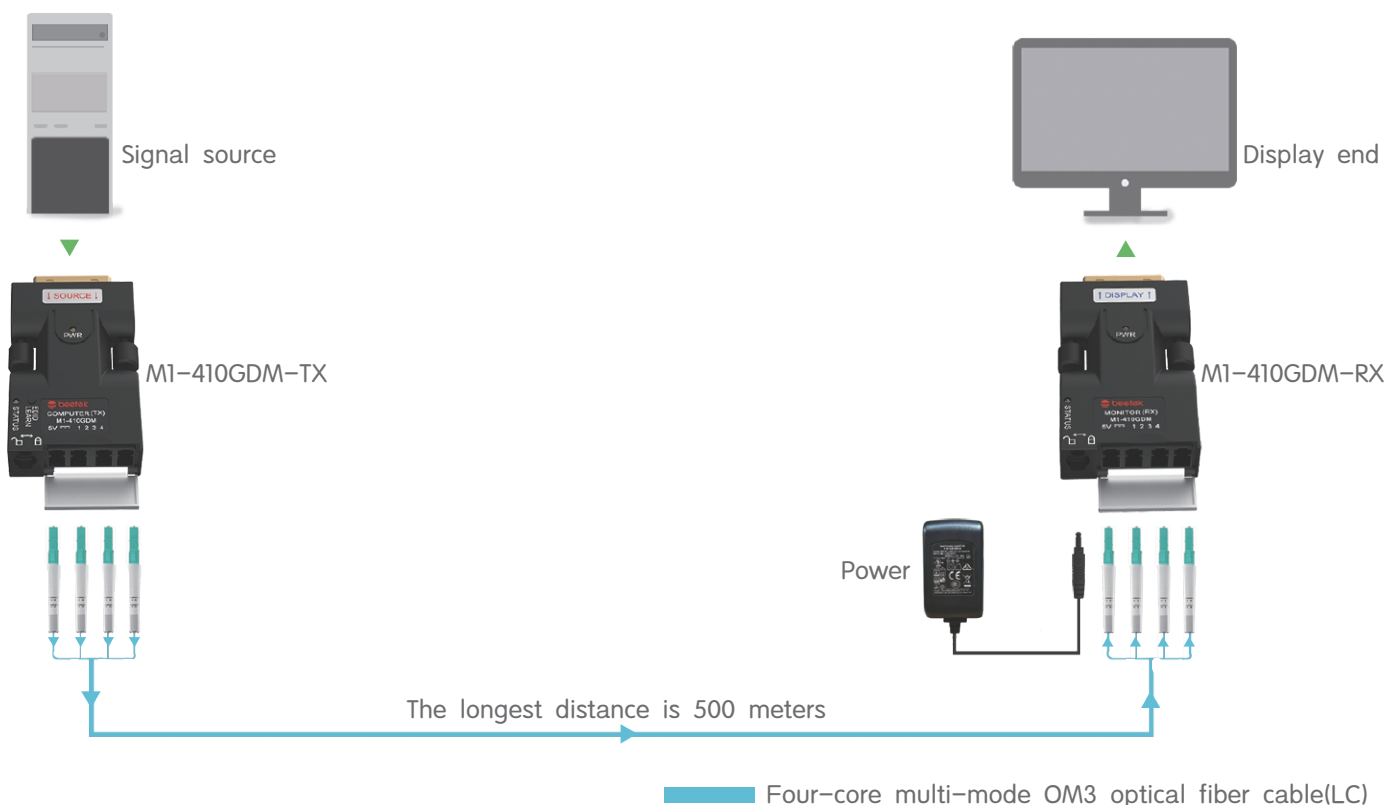


number	name	number	name
①	DVI 18+1(M)	⑤	DC 5V power port
②	EDID Learning button	⑥	LC fiber interface
③	POWER Red LED	⑦	EDID learning light
④	Dust cover	⑧	Signal light

## Technical characteristics

- ◆ Mini-style four-core multi-mode DVI fiber extender.
- ◆ Lossless video extension without compression and zero-frame delay, 100% restoration of source signal.
- ◆ The transmission rate is 4.95Gbps and supports up to 1920\*1080@60Hz.
- ◆ Multi-mode fiber with four-core LC connector can transmit up to 500 meters.
- ◆ With its Mini-style design, it can plug and play directly to the signal source or display end
- ◆ Reliable connection is ensured with locking power supplies and dust-proof fiber interface latches.
- ◆ To solve the pain-point of power supply, the transmitter can take power, and there is also an optional USB power supply cable provided.
- ◆ Built-in EDID transmission and an EDID learning mode make the product suitable for various applications.
- ◆ 15μ high-quality gold-plated DVI pins support more than 5000 times of repeated plugging and unplugging.

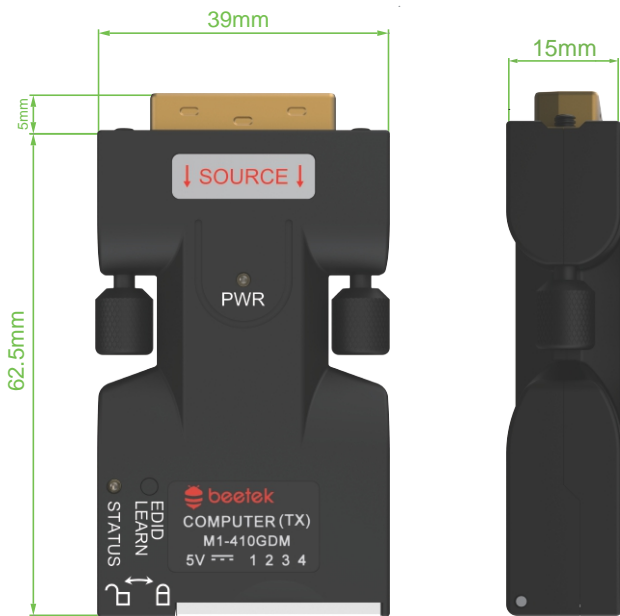
## Application view



## Product parameter

name	parameter
Input Interface	TX: DVI 18+1 Male RX: 4-core LC
Output Interface	TX: 4-core LC RX: DVI 18+1 Male
Gold plate Interface	Casing: 3 $\mu$ ; Pin: 15 $\mu$
Fiber Interface Dust Prevention	Yes
Fiber Type	Multi-mode fiber
Indicator LED	TX: Power, EDID; RX: Power, Signal
USB Power	Yes
Power from Interface (TX)	Yes
Locking power Interface	Yes
Power Consumption	DC 5V 1.0A
Ambient Temp	-20 $^{\circ}$ C ~70 $^{\circ}$ C
Material	Zinc alloy mold
EDID Switch (TX)	Learn button
EDID Modes	EDID Learning and Internal
HDMI Audio	Yes
XvYCC Color Space	Yes
Fiber module life	100,000 hours
Optical Module	4 * 2.5G Multi-mode Optical Module
Technical Characteristics	Laser Switching Technology
Resolution	1920*1080@60Hz
Transmission Distance	500M
Clock Bandwidth	165MHz * 3
Transmission Speed	4.95Gbps
Balancing Chip	Yes
ESD Protection	Yes
Hot Plug	Yes
Delay	Zero-frame
Compression	None
Sampling Rate	Bandwidth Range: 8bit
Sampling Ratio	RGB 4:4:4、YUV4:4:4、YUV4:2:2、YUV4:2:0

## Dimensional drawing



- Product size TX\RX: 68 \*39 \*15mm
- Product weight TX: 99g; RX: 99g
- Package size 212 \*201\* 62mm
- Packing weight 0.52kg