

MI-USB321

USB3.1gen1 Fiber Extender
(compatible with USB2.0 and 1.1)

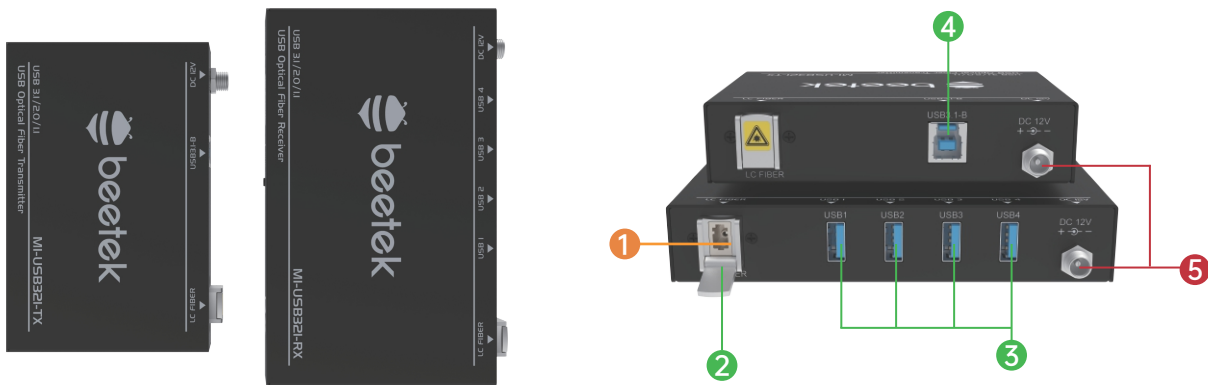
Product number:2.05

Summary

M1-USB321 is an uncompressed, lag-free USB 3.1gen1 single-mode fiber extender which can losslessly transmit a USB 3.1gen1 (backward compatible with USB 2.0 and USB 1.1) signal up to 200 meters over a one-core LC single-mode fiber at a transmission speed of 5Gbps. The USB HUB on the receiver gives 4 USB ports that support all USB3.1gen1 peripherals. No drivers are required, just plug and play. Supports data transfer, image transfer and Kinect sensor. We designed this product with locking power supplies and dust-proof fiber interface latches which make signal connection more reliable.



Product view

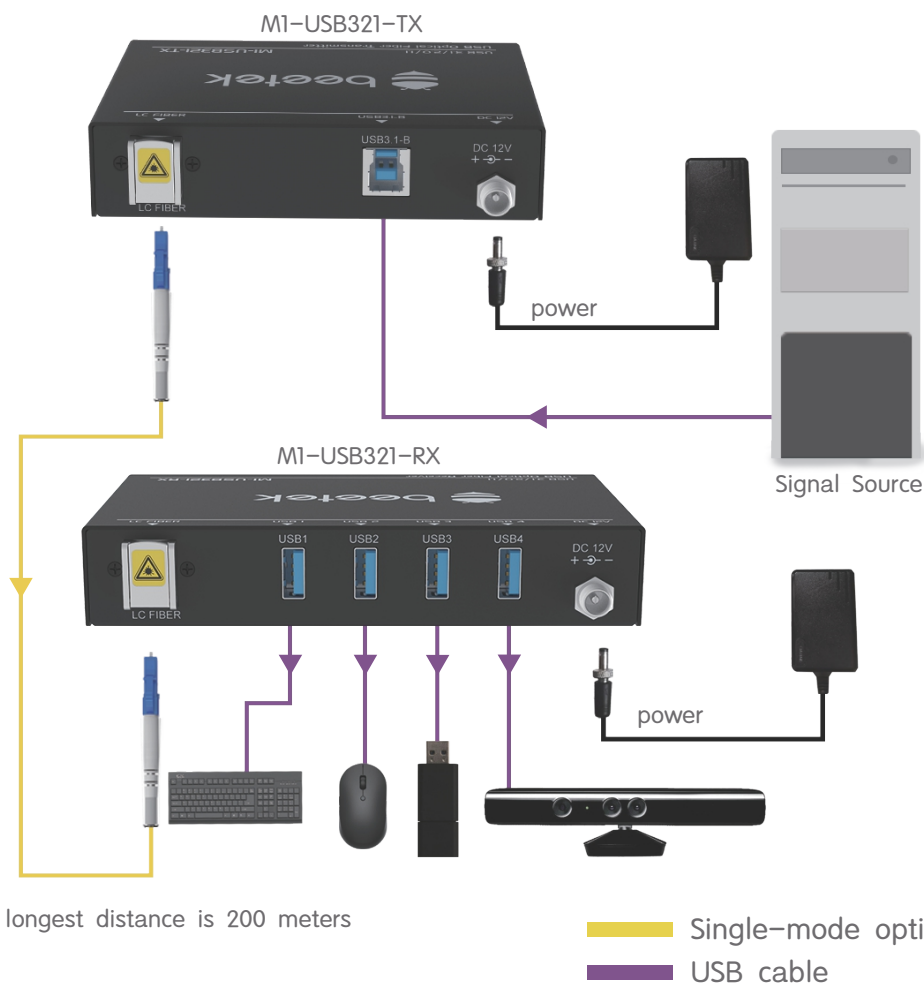


number	name	number	name
①	LC fiber interface	⑤	Power interface
②	Dust cover		
③	USB TypeA *4		
④	USB TypeA		

Technical characteristics

- ◆ One-core single-mode USB3.1gen1 fiber extender.
- ◆ Uses CWDM and photoelectric conversion technology and has delay-free high bandwidth.
- ◆ The maximum transmission speed of 5Gbps.
- ◆ Single-mode G657.A1 fiber with one-core LC connector can transmit up to 200 meters.
- ◆ The transmitter and receiver are USB 3.1gen1 and backward compatible with USB 2.0/1.1.
- ◆ The receiving end is equipped with a 4-port HUB, which supports the use of the KINECT sensors and other USB 3.1gen1 peripherals.
- ◆ Supports hot-plugging, does not need drivers, and is plug and play.
- ◆ Locking power interfaces, locking HDMI interfaces, and dust-proof optical fiber latches ensure a reliable connection.
- ◆ Three-way indicator LED for signal, power and status make troubleshooting fast and easy.
- ◆ Optional 1U tray is available for cabinet installation.

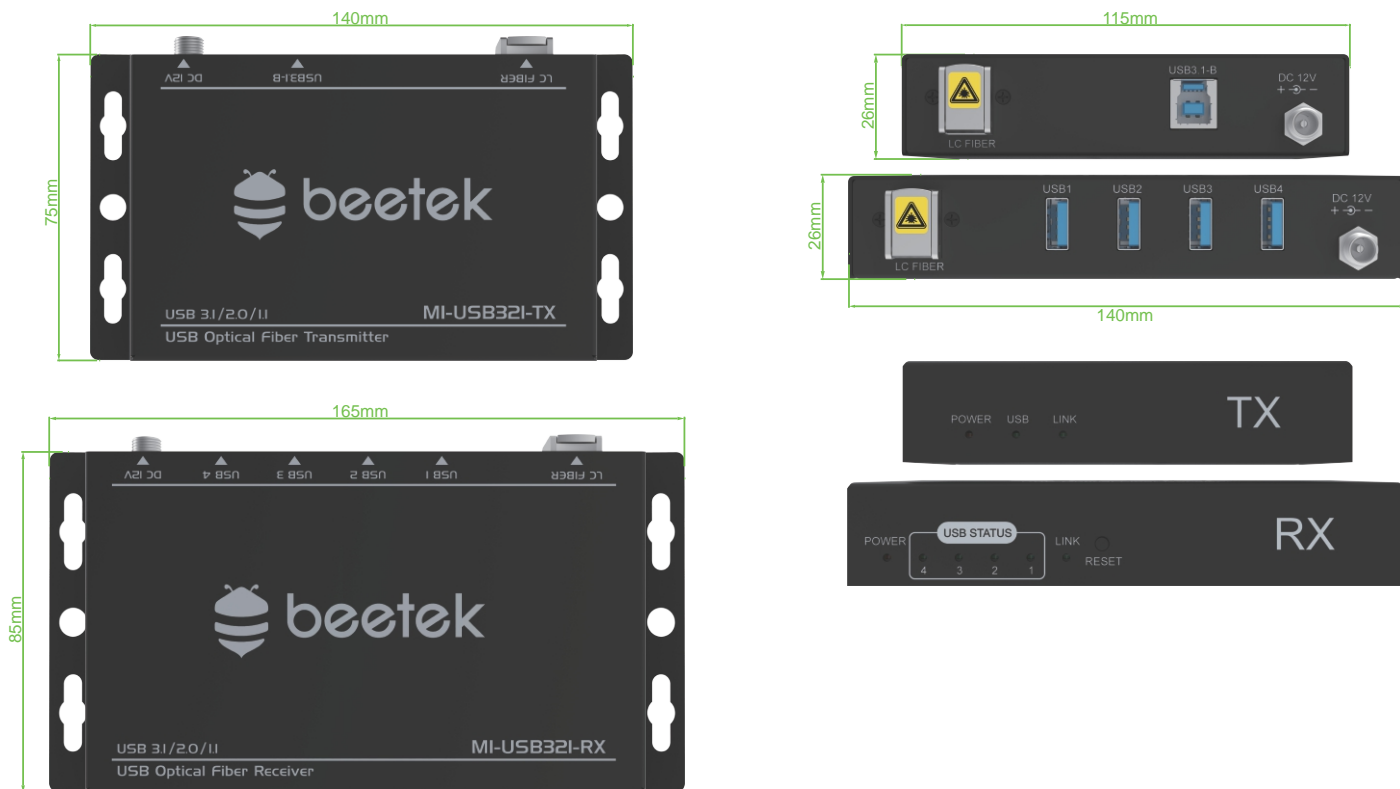
Application view



Product parameter

name	parameter
Signal	USB3.1gen1 (backwards compatible)
Input Connector	TX : USB Type-B female; RX: One-core LC
Output Connector	TX : One-core LC; RX: USB Type-A female x 4
Fiber Interface Dust Prevention	Single-mode G657.A1
Indicator LED	Signal, Power, Status
Fiber Interface Dust Prevention	Yes
Locking power connector	Yes
Power Consumption	DC 12V 2A
Ambient Temp	-20° C ~ 70° C
Material	Metal mold
Dimensions	TX:115 *75 *26mm; RX:140 *85 *26mm
Weight	TX 0.35kg ;RX 0.45
Package Dimensions	226 *160 *121mm
Packaging Weight	1.25kg
HUB	4-Port USB3.0
Compatibility	USB3.1、USB2.0、USB1.1
Drive	Free Drive
Data Transmission	Yes
Image Transmission	Yes
Kinect	Yes
Optical Module	2*10G 2-channel single-mode optical module
Technical Characteristics	2-wave CWDM Technology
Optical module life	100,000 Hours
Transmission Distance	Single-mode 200M
Transmission Speed	5Gbps
Balancing Chip	Automatic equalization
ESD Protection	Yes
Hot Plug	Yes
Delay	Zero-frame
Compression	None
Anti-interference	Yes

Dimensional drawing



- Product size TX:115 *75 *26mm; RX:140 *85 *26mm
- Product weight TX 0.35kg ;RX 0.45kg
- Package size 226 *160 *121mm
- Packing weight 1.25kg